

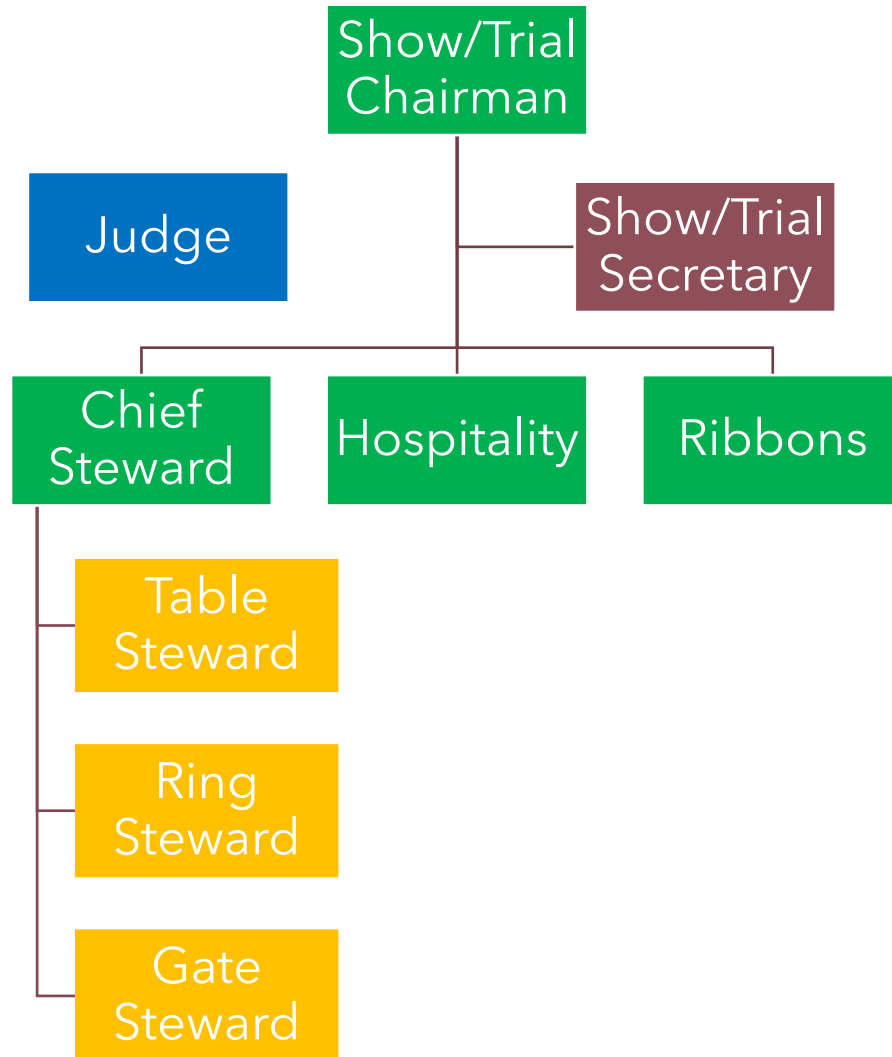
Stewarding for AKC Obedience Trial

What is stewarding?

- Stewarding is an essential part of any AKC trial
- Support the Judge in maintaining an efficient and smooth trial
- Primary functions include
 - **Setting up the ring**
 - **Checking participants in**
 - **Assisting with paperwork**
 - **Coordinating participants ring side**
 - **Taking and returning leash to exhibitor**
 - **Adjusting jump heights**
 - **Setting out gloves**
 - **Setting out Scent articles**



Obedience Trial Committee



- **Show/Trial Chairman**

- Responsible for managing the trial, arranging for judge, akc approval, show site and stewards

- **Show/Trial Secretary**

- Responsible for managing trial entries, judge's official paperwork, armbands, submissions of scores to AKC

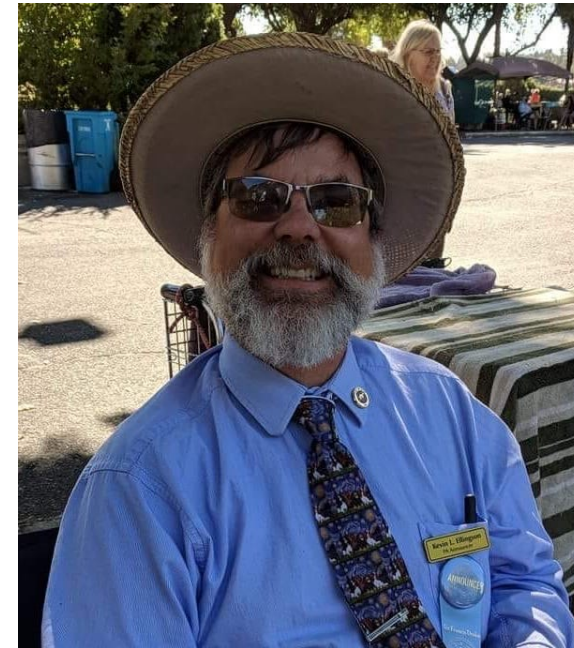
- **Chief Steward**

- Coordinates and trains stewards



Who Can Steward?

- Anyone!
- No experience in stewarding or competing necessary!
- Most get on the job training
- Restrictions
 - May not steward in the class you are showing in



Types of Stewards and Duties



Table Steward

- **Check in Exhibitors**
 - **Trial Secretary will provide judging program, catalog and armbands**
 - **Confer with Judge on when each class may check in**
 - **In the Catalog there will be name, breed, handler and arm band #**
 - **Exhibitor should provide their information and verify the jump height**
 - **Some may have more than one entry**
 - **Some may be entered in more than one class**
 - **Any discrepancies should be discussed between exhibitor and judge**
- **Provide exhibitor with armband and rubber band**
- **Check off exhibitor in judging program**
- **Cross out on the Order board**



NORWEGIAN ELKHOUND ASSOCIATION OF NORTHERN CALIFORNIA
OBEDIENCE/RALLY TRIAL JUDGING PROGRAM – THURSDAY, FEBRUARY 16, 2023
 For your convenience, the following class divisions have been carefully tabulated, however, neither the Club nor the Event Secretary assumes responsibility for absolute accuracy. **Breaks Will Be at the Judge's Discretion.**

RING #12		OBEDIENCE	
		(Total 25 Dogs, 38 entries)	
		JUDGE: SANDRA WALKER	
		CHIEF RING STEWARD: GAIL BUDDE	
		OBEDIENCE – OPEN & UTILITY CLASSES	
	# Dogs		
10:00 AM	13	Utility B	(#5, 7-9, 11-12, 14-17, 19-21)
	2	Utility A	(#6, 22)
Afternoon	15	Open B	(#5-12, 14-18, 20-21)
	5	Open A	(#23-27)
	1	Novice B	(#28)
	2	Beginner Novice B	(#29-30)

Lunch at the Judge's Discretion



Table Steward (cont.)

- **Check in Exhibitors (cont.)**
- **Coordinate any changes associated with conflicts or move ups**
- **Move ups must be requested and approved through show secretary**
- **Show secretary will change the book before the trial starts**
- **Judge and Steward cannot change**

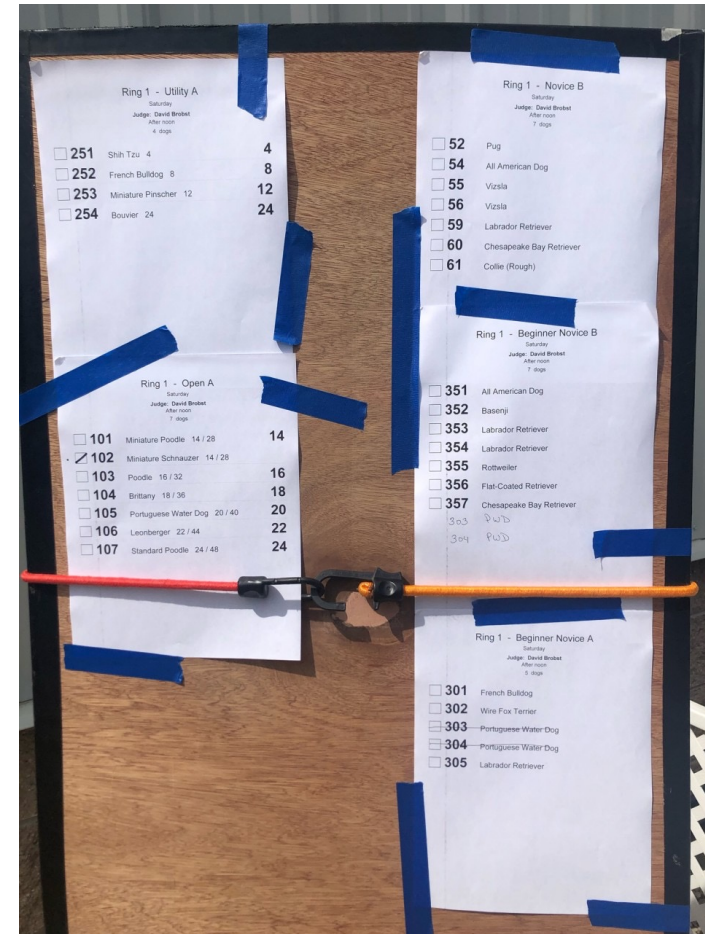


Table Steward (cont.)

• **Book work if requested by Judge**

See chapter 5 Judge's book

• **Worksheet**

• **Class, armband, breed are correct**

• **Review scorebook for entry errors**

• **Never write in scorebook!**

• **Bring any possible errors to Judge's attention**

• **Scorebook may only be exchanged between the Judge and Trial Secretary**

• **Exhibitors may not look at scorebook**

• **Scores will be posted by the Trial Secretary**

• **Exhibitors may request to discuss performance with the Judge**

• **Organize trophies/ribbons as outlined in catalog**

SAMPLE OBEEDIENCE JUDGE'S WORKSHEET

(Guide for Judge's Use ONLY - May be modified, as desired.)

DATE: _____ CLASS: **NOVICE** (A or B) DOG NO. _____
 SHOW: _____ BREED: _____
 (Note: If a dog receives a non-qualifying score for any exercise, (NQ) should be recorded in points-off column. Total score need not be given. NQ may be put in Total Score column.)

EXERCISE	NON-QUALIFYING (NQ)	QUALIFYING	Max. Points	Points Lost	NET SCORE
HEEL ON LEASH THEN FIGURE 8	Heeling Fig. 8 Unmanageable _____ Unqualified Heeling _____ Handler continually _____ Adapts pace to dog _____ Constant tugging on Leash or guiding _____	Heeling Fig. 8 No change of pace Fast _____ Slow _____ Improper heel position _____ Occasional tight leash _____ Forging _____ Crowding handler _____ Lagging _____ Sniffing _____ Extra command to heel _____ Heeling wide _____ Turns _____ Abouts _____ No sits _____ Poor sits _____ Brisk pace _____ Handler error _____	40		
STAND FOR EXAM	Sits or lies down before or during examination _____ Growls or Snaps _____ Moves away before or during examination _____ Shows shyness or resentment _____	Moving slightly before or during _____ Moves feet _____ Moving after examination _____ Sits or lies down after exam _____ Heel position _____ Extra signal or command _____ Handler error _____	30		
HEEL FREE	Unmanageable _____ Unqualified heeling _____ Handler continually adapts pace to dog _____ Leaving handler _____	No change of pace Fast _____ Slow _____ Improper hand position _____ Forging _____ Crowding handler _____ Lagging _____ Sniffing _____ Extra command to heel _____ Heeling wide _____ Turns _____ Abouts _____ No sits _____ Poor sits _____ Brisk pace _____ Handler error _____	40		
RECALL	Didn't come on first command or signal _____ Anticipated _____ Extra command or signal to stay _____ Moved from position _____ Sat out of reach _____ Leaving handler _____	Stood or lies down _____ Slow response _____ Touched handler _____ No sit in front _____ Sat between feet _____ No finish _____ Poor sit _____ Failure to come directly to handler _____ Poor finish _____ Failure to come at a brisk trot or gallop _____ Handler arms not at side _____ Handler error _____	30		
SIT STAY GET YOUR LEASH	Did not remain in place _____ Repeated whines or barks _____ Handler error _____ Stood or lies down before handler returns _____ Handler returns _____	Stood or lies down after handler returns to heel position _____ Minor move before handler returns _____ Minor whine or bark _____ Handler error _____	30		
	NQ	MAX Sub Total	170		
		MISCELLANEOUS PENALTY	⇒		
		TOTAL NET SCORE	⇒		
NQ = RELEASE FROM GROUP EXERCISE					
Qualifying Score:					
Are you returning for the Group Exercise? YES ___ NO ___					

SAMPLE MARKED JUDGES' BOOK NOVICE

Name of Club: _____
 (Event#): _____ Day/Month/Year
 Judge: _____

NOVICE CLASS A (Indicate A or B)
 MAXIMUM TOTAL SCORE — 200 Points

ENTER POINTS OFF FOR EACH EXERCISE UNDER APPROPRIATE ARMBAND NUMBER

Dog Number	101	102	103	104	105	106	107	108
Heel on Leash (40 Points)	1.5	1	0.5	8	4	2	5	1
Stand for Exam (30 Points)	0	0	0	NQ	0	0	0	0
Heel Free (40 Points)	4	4	4.5	6	8	9	3.5	6
Recall (30 Points)	1	0	3.5	1	0	14	2.5	10
Sit-Stay Get Your Leash (30)	0	0	0	NQ	0	0	0	0
Subtotal of Points off	6.5	5	8.5	NQ - R	12	25	11	17
Group Sit & Down (30)	0	0	0	NQ	3	0	0	AB
Miscellaneous Penalties	0	0	0	0	20	0	0	0
Maximum Score (200)	200	200	200	200	200	200	200	200
POINTS OFF (Subtract)	-6.5	-5	-8.5	-	-35	-25	-11	-
Total Score	193.5	195	191.5	NQ	NQ	175	189	NQ
FINAL QUALIFYING SCORE	193.5	195	191.5			175	189	

	First Place	Second Place	Third Place	Fourth Place
W INNERS:	102	101	103	107
SCORE:	195	193.5	191.5	189

Time Started: 9:00 Time Finished: 9:40

(Please Use Ball Point Pen)



Gate Steward

- **Keep show running on time**
- **Ensure that teams are ready and ringside as shown on the run board**
 - **Although not required to chase down participants it is frequently done as a courtesy**
 - **Ensure armband matches participant and run order**
 - **If team is not ready, move to next team with judge's approval**
 - **Report absences to judge**
 - **Coordinate any change in order requests for judge's approval**
- **Open**
 - **Ensure the Dumbbell is available**
- **Utility**
 - **Ensure Articles and Gloves are available**
 - **Once the team is inside the ring take the leash from exhibitor**
 - **After last exercise bring leash to the exhibitor**



Run Board

Ring 1- Open A

Judge: Jane John

After Noon

8 Dogs

Checked in and run complete

Jump Height

Checked in and not yet run

Absent

<input checked="" type="checkbox"/>	101 Pomeranian	4
<input type="checkbox"/>	102 Corgi	8
<input checked="" type="checkbox"/>	103 Labrador Retriever	20
<input type="checkbox"/>	104 Golden Retriever	22
<input type="checkbox"/>	105 Golden Retriever	24
Abs	107 German Shepard	24
<input type="checkbox"/>	108 All American	24
<input type="checkbox"/>	109 Irish Wolfhound	26



Ring Steward-Beginner Novice

- **General Concepts for Ring Stewards**

- **Reduce time required to shuttle and adjust ring equipment**
- **Monitor for disturbances**
 - **Dogs that may leave the ring**
 - **Gate side activity**
- **Ideally 2 people**
- **Duties vary by class**

- **Beginner Novice**

- **Have signs ready for judge to position in ring**
 - **Some judges prefer one to put out station and the other to follow and place sign**
- **Hold clipboard for judge during sit for exam if instructed by judge**
- **Monitor for disturbances**
 - **Traffic cop for teams leaving and entering the ring**
 - **Dogs that may leave the ring**
 - **Gate side activity**



Ring Steward-Novice

- **Take leash from handler prior to Stand for Exam and place at location designated by judge**
- **Hold clipboard for judge during exam if requested**
- **Note which dogs will come back for sits and downs**



Ring Steward-Open

- **Verify jump height and adjust as required**
 - **Ensure measuring tape is readily available for broad jump changes**
 - **Maybe stored under the first board**
- **Take leash and dumbbell from handler**
 - **Place dumbbell on judging table**
 - **Place leash on chair outside ring**
 - **Deliver dumbbell to judge or handler as directed**
 - **Retrieve dumbbell from judge after retrieve over high as directed**

NOTE: Exercise run order varies in Open B, see judge for details



Ring Steward-Utility

- **Scent Discrimination**
 - Remove one metal and one leather or wood article from bag using tongs
 - Judge may designate a specific # in the sequence, if not choose 2 of the same number
 - These items will be scented by handler
 - Place 2 articles on chair inside the ring prior to the handler entering the ring
- When directed by judge, position articles
 - ~20ft from handler
 - Do not dump bag
 - Touch each article and randomly position in a circle ~ 6 inches apart

- After exercise is finished
 - Return "cold" articles into bag and set "hot" articles on top of bag
 - Place bag on judging table



NOTE: Exercise run order varies in Utility B, see judge for details



Ring Steward-Utility

- **Ideally 2 people are available**
 - **One for Bar jump**
 - **One for High jump**
- **Verify jump height with exhibitor**
 - **Heights increase in increments of 2 inches**
 - **Heights are determined by dog's height at withers**
 - **Note some breeds are $\frac{3}{4}$ of withers**
 - **Both bar and high jump will be the same height**
 - **Adjust jumps as required**
- **Should become familiar with how the jumps are adjusted**
 - **Bar jump**
 - **Pins to set height**
 - **Bar sits on the side which the handler will stand**
 - **High jump**
 - **Boards slide in**
 - **Come in 2, 4 and 8 inch boards**



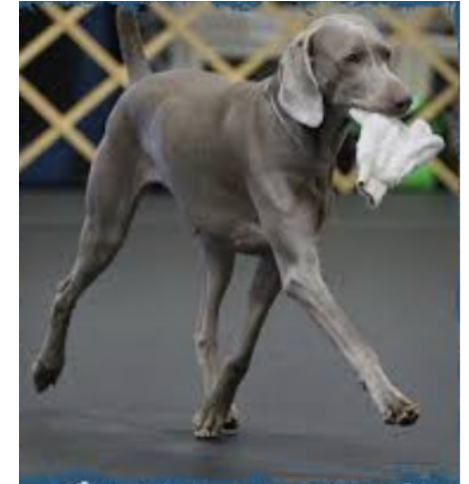
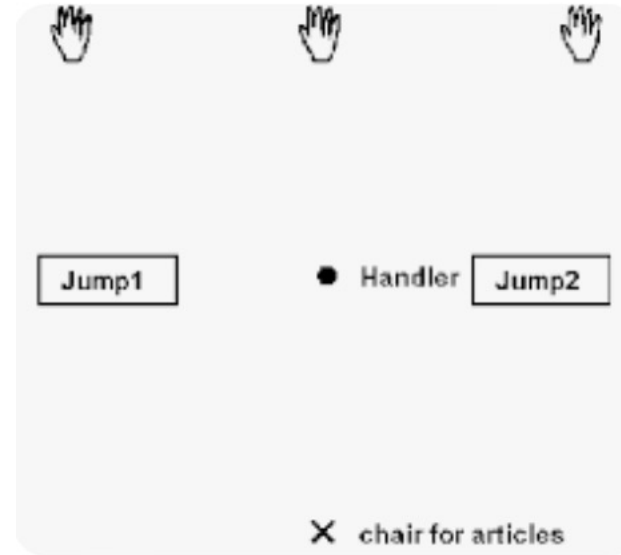
Ring Steward-Utility

Directed Retrieve

- Take gloves from judging table and go to far end of ring as directed by judge
- When handler and dog are positioned facing in opposite direction place gloves on ground
 - One in each corner and one in center
 - ~3 feet from gates
 - Should be flat and open
 - Center glove should be directly behind the handler
- Stand to the side of the jump
- Remove remaining 2 gloves at conclusion of exercise and return to table

Moving Stand

- Hold judge's clipboard during exam if requested



Why Volunteer to Steward?

- Good stewards make judges happy and willing to judge future trials
- Good stewards help create a positive experience for exhibitors, which in turn encourages them to continue to compete
- Stewarding is a good way to observe and learn how a trial is run and gain valuable hands on experience

What's in it for me?

- Opportunity to learn the rules
- See the good performances and learn from the errors of others
- Build relationships with other handler's and clubs
- Free lunch!



Commonly Asked Questions

- **Can I steward in a show I am entered in?**
 - *Yes! You just can't steward in the class you are entered.*
 - *For example, if you are entered in Novice A you cannot steward in Novice A. This is a conflict of interest*
- **Can I steward in class I have no experience in?**
 - *Yes! You will get on the job training and learn so much!*
- **Who can I contact to volunteer?**
 - *Trial Chair which can be found in the Premium or if assigned a Head Steward*
 - *Anyone from the club can point you in the right direction*
- **Can minors steward?**
 - *Yes! Should be able to take instruction and mature enough to be respectful of competitors*
- **Do I need to be a member of the hosting club to steward?**
 - *No! Members and Non-members are welcome!*
- **I am related to a competitor. Can I steward?**
 - *Yes! You can steward! However, you should refrain from stewarding in the class they are competing.*



Resources

- [AKC Obedience Regulations](#)
- [Saccarappa Obedience Club website](#)
- Videos on Stewarding (note: some are outdated)
 - [Novice](#)
 - [Open](#)
 - [Utility](#)



*Thank you!
Hope to see you soon!*

Saccarappa Obedience Club

